

# Hawle Synoflex End Cap

Technical Guide W5.16

Hawle Synoflex End Cap allows you to terminate a pipeline quickly and easily.



## Applications

Pump stations  
Treatment plants  
Pipelines  
Pipe repairs

## Product Attributes

Fits most common pipe materials  
Restraint End Cap  
Wide fitting range  
No liners required

## Approvals/Standards

EN 14525:2004 Ductile Iron  
Potable water use to AS 4020:2018  
Kiwa BRL-K 775/03  
WSAA Approval 2021

## Quality

ISO 9001 Quality Management Systems

*We are the supply partner of choice for New Zealand's civil construction industry, specialising in water and infrastructure based solutions.*

An easy to install quality range of restraint end caps from Hawle.  
High tolerance range to accept DI, PE/PVC and AC pipes.

### Product Attributes

Includes a radial 2" tapped thread for easy installation of pipeline test equipment.



FIG. 1

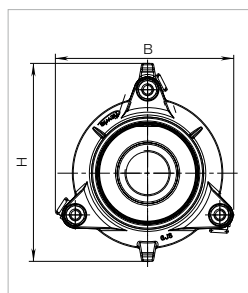


FIG. 2

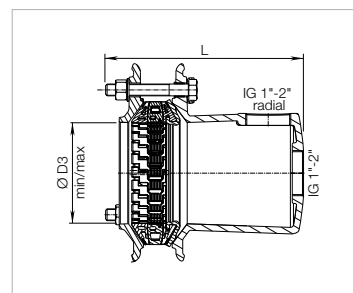


FIG. 3

TABLE 1 Synoflex end cap

Hygrade Code	DN	MOP (PN)	Socket				L	Weight (kg)
			B	H	Pipe $\phi D3$ min / max	Bolts		
GBCSYN100T-C	100	16	226	260	104 - 132	3x M16	256	8.8
GBCSYN150T-C	150	16	315	350	155 - 192	4 x M16	279	15.2

Branches Nationwide Support Office & Technical Services 0800 93 7473

**Disclaimer:** While every effort has been made to ensure that the information in this document is correct and accurate, users of Hynds product or information within this document must make their own assessment of suitability for their particular application. Product dimensions are nominal only, and should be verified if critical to a particular installation. No warranty is either expressed, implied, or statutory made by Hynds unless expressly stated in any sale and purchase agreement entered into between Hynds and the user.