

Hawle E3 Resilient Seated Gate Valves DN350 – DN600

Technical Guide W4.47

The Hawle E3 Sluice Valves are a PN16 rated, resilient seated gate valve in sizes from DN350 – DN600. The low torque design means easy closing even at full pressure differential without a bypass valve. European designed and manufactured for a long life and reliable operation in water networks, they are also covered by the Hawle 10 Year “Quality Warranty” when in use on potable water applications.



01.26 | W4.47 HAWLE E3 RESILIENT SEATED GATE VALVES DN350-DN600

Applications

Potable water networks

Bulk water storage

Process water systems

Pump stations

Product Attributes

Wear resistant wedge guides

Low closing torques at full differential pressure – no bypass valve required

Smooth straight through bore

Suitable for actuation

Components designed for corrosion protection

New components designed for improved corrosion protection

Approvals/Standards

EN 1074-1, EN 1074-2, EN 12266-1

Flanges to AS 4087 B5

WSAA Product Appraisal 11/23

Quality

ISO 9001 Quality Management Systems

We are the supply partner of choice for New Zealand's civil construction industry, specialising in water and infrastructure based solutions.

E3 Valve Flanged Ends DN350 – DN600

The Hawle E3 resilient seated gate valve is a high-quality water valve designed for a long service life. It has been developed from the long serving and successful E2 series gate valve, with some small changes to further enhance the longevity and reliability of the new E3 range. The wear resistant guides ensure easy reliable operation, while the “O” ring system allows field maintenance under operating pressure. The epoxy coating system complies with the requirements of the relevant German and Australian Standards for contact with Potable Water. Some of the new features include lead free brass and added corrosion protection internal components.

Product Features

- 100% suitable for underground installation.
- Anti-Clockwise closing as standard. Clockwise Closing also available.
- Smooth straight-through bore allows for easy cleaning with a pig.
- Duplex stainless-steel spindle with cold rolled thread for superior strength
- Spindle supported in ball bearings for minimum closing forces.
- Ductile Iron wedge is fully vulcanised for use in potable water. The wedge is connected to the lead free brass wedge nut with a flexible link and embedded in a vulcanized elastomer. A snug fit dampens vibration during opening and closing of the valve.
- Can be easily opened or closed without a by-pass valve or power assistance, even at a differential of 16 bar.
- The new design of the spindle seating allows for the O-rings being replaceable under operating pressure on all sizes of E3 valves.

- Designed for easy fitment of actuators and other accessories
- Hawle 10 Year “Quality Warranty” when in use on potable water applications.
- Extended edge protection to avoid body damage during transport, storage and assembly.
- Epoxy coating system complies with the requirements of the relevant German and Australian Standards for contact with Potable water.

Standard Version

- Supplied with Spindle Cap

Optional Accessories

- Handwheel
- Angular Gearbox
- Electric Actuator
- Position Indicator
- Extension Spindles
- Bypass valve for DN500, DN600 only

TABLE 1

No.	Component	Materials/Description
1/2	Body and bonnet	Ductile iron EN-GJS-400-15 according to EN 1563 (GGG 400 – DIN 1693) inside and outside epoxy powder coated according to DIN 30677-T2 in accordance with DIN 3476 and in compliance with AS4020
3	Spindles	Duplex Stainless Steel
4	Wedge	Ductile iron EN-GJS-400-15 according to EN 1563 (GGG 400 – DIN 1693), inside and outside fully rubberized with vulcanized elastomer
5	Wedge guide	Wear resistant plastic with high gliding features
6	Wedge nut	Dezincification resistant brass CuZn36Pb2As
7	O ring bush	CW617N
8	O-rings	Elastomer, embedded in non-corrosive material (according to DIN 3547-T1) and replaceable under pressure (according to ISO 7259)
9	Back seal	Elastomer
10	Circlip	POM
11	Wiper ring	Elastomer
12	Bonnet gasket	Elastomer
13	Allen screws	St 8.8 DIN 912 absolutely corrosion protected by being sunk into the body and sealed, and by passing through bonnet gasket
14	Edge protecting ring	PE avoids damages during transport and storage
15	Friction washers	POM guarantees smooth spindle guiding
15	Safety Screw	Safety screw made of stainless steel

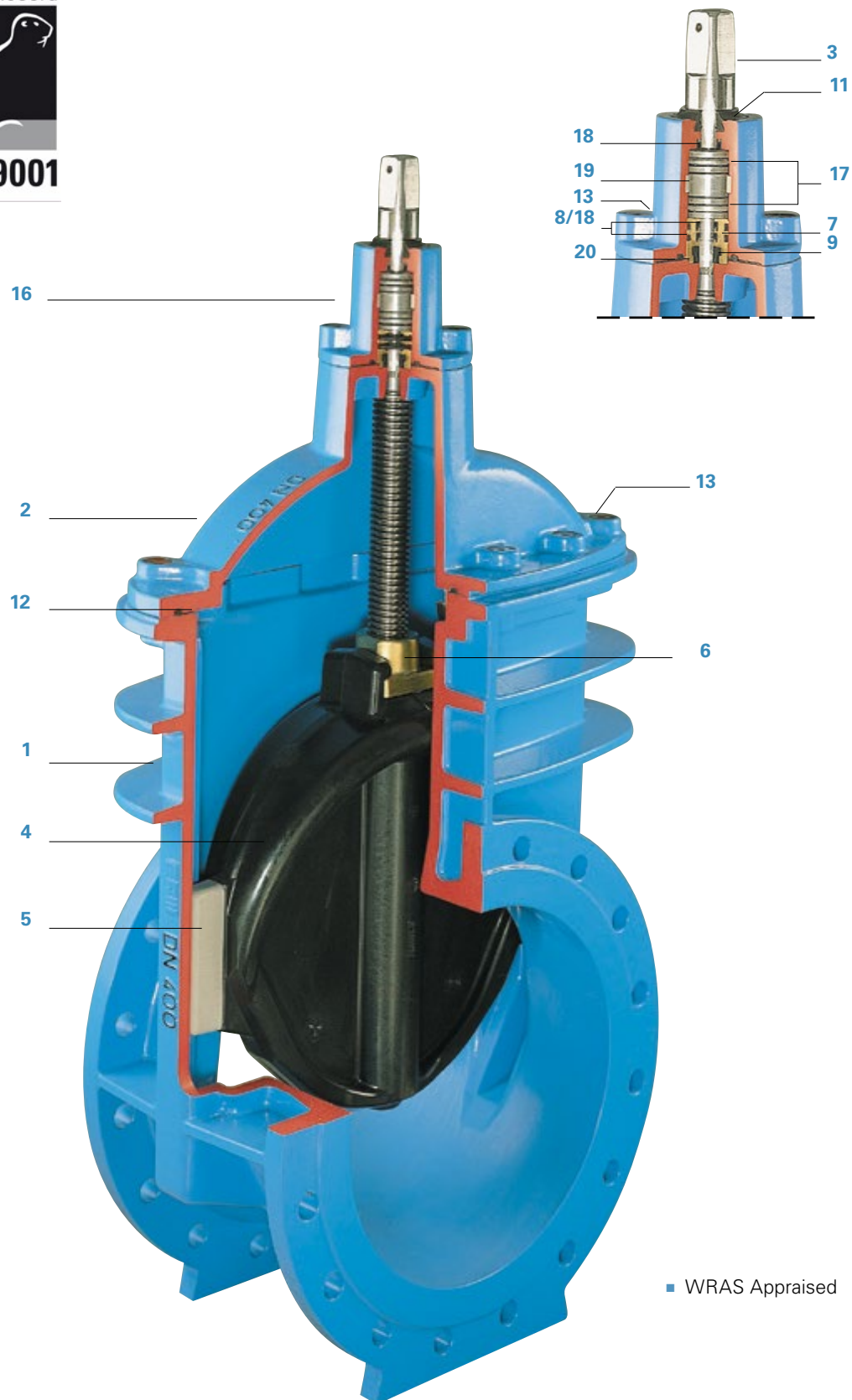


FIG. 1 Hawle E3 Valve Flanged Ends DN350 – DN600

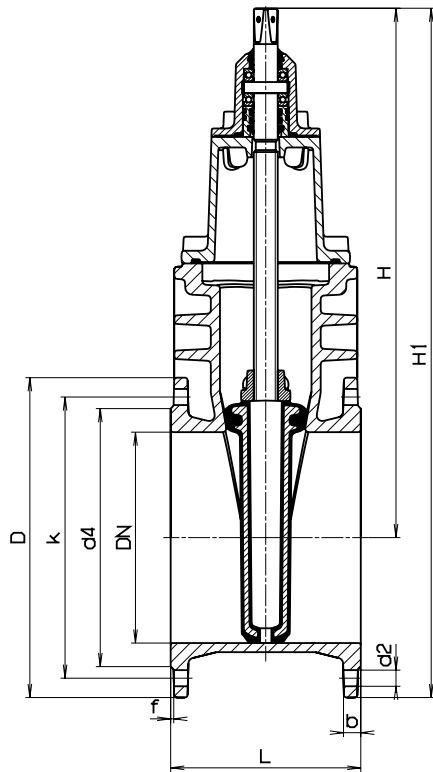


FIG. 2

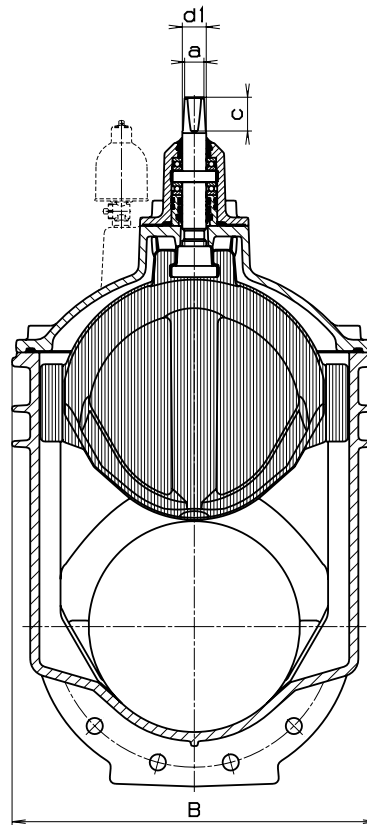


FIG. 3

TABLE 2

Item Code	DN (mm)	PN (bar)	Flange					Bolts			Spindle					Valve		Weight (kg)
			D	b	k	d4	f	Qty.	Size	d2	a	c	d1	H	H1	L*	B	
VSDF-350-3	350	16	520	26.5	470	427	4	12	M24	28	27.3	48	34	816	1076	290	604	205
VSDF-400-3	400	16	580	28	525	477	4	12	M24	28	32.3	55	44	925	1215	310	687	266
VSDF-450-3	450**	16	640	30	585	530	4	12	M24	28	32.3	55	44	925	1261	650	687	329
Indent	500	16	715	31.5	650	582	4	16	M24	28	36.3	66	50	1149	1507	350	800	471
VSDF-600-3	600	16	840	36	770	720	5	16	M27	30	36.3	66	50	1306	1726	390	944	690

Notes:

*Other body lengths available on special order

** DN450 Flanged Connection on DN400 body.

For more information click here: <https://www.hawle.com/en/products/gate-valves/e3-gate-valve>

Branches Nationwide Support Office & Technical Services 0800 93 7473

Disclaimer: While every effort has been made to ensure that the information in this document is correct and accurate, users of Hynds product or information within this document must make their own assessment of suitability for their particular application. Product dimensions are nominal only, and should be verified if critical to a particular installation. No warranty is either expressed, implied, or statutory made by Hynds unless expressly stated in any sale and purchase agreement entered into between Hynds and the user.