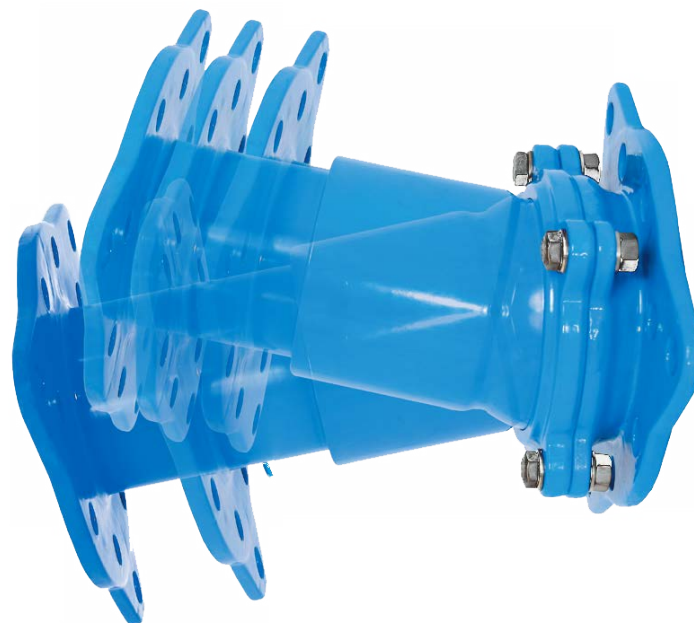


Hawle-Vario Telescopic Pipe Spool

Technical Guide W3.7

A flanged telescopic fitting with integral ball and socket joint that allows for adjustable length and installation deflection up to 10 degrees.



03.22 | W3.7 HAWLE VARIO

Applications

Potable water and wastewater pipelines
 Water main renewals
 Pipe misalignment
 Dismantling point

Product Attributes

Adjustable flange to flange length
 Available in short and long versions
 Allows for deflection up to 10°
 Quick and easy installation

Quality

ISO 9001:2008 Quality Management Standard

We are the supply partner of choice for New Zealand's civil construction industry, specialising in water and infrastructure based solutions.

A flanged telescopic fitting with integral ball and socket joint that allows for adjustable length and installation deflection up to 10 degrees.

Design Specifications

- All components made of ductile iron and coated by GSK epoxy powder inside and out
- Tension lock assembly and locking ring are stainless steel
- Suitable for an operating pressure up to 16 bar
- Adjustable length via a telescopic mechanism:
 - For DN100 short version, flange to flange length adjustment of 150 to 216mm
 - For DN100 long version, flange to flange length adjustment of 216 to 350mm
- Once installed, tension bolts lock the HAWLE-VARIO at the desired length
- Locking bars prevent further movement once installed

Applications

- Connecting pipelines where alignment or spacing between flanges prevent the use of normal techniques
- As a dismantling joint where future work may require removal and re-installation of inline components

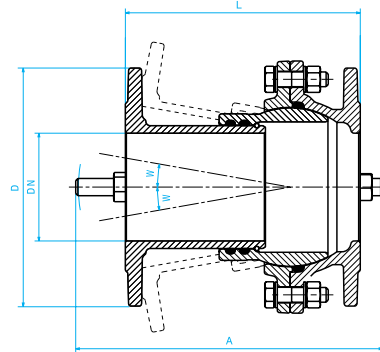


FIG. 1

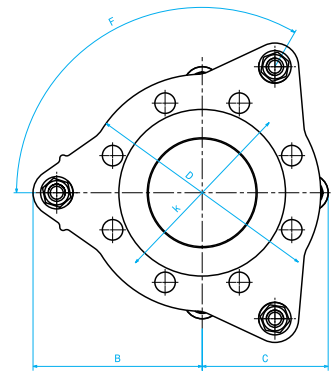









FIG. 2

Code	DN	Version	PN	Adjusting range L (mm)	A	B	C	D	F	k	Angle W	Weight (kg)
 50 Short 16	50	Short	16	150-207	285	212	87	165	3 x 120°	125	0-10°	8.9
 50 Short 16	50	Short	16	207-323	415							10.2
 80 Long 16	80	Long	16	150-214	285	247	107	200	3 x 120°	160	0-10°	12.9
 80 Long 16	80	Long	16	214-344	415							15.2
PSDFHV100S	100	Short	16	150-216	285	267	117	220	3 x 120°	180	0-10°	14.8
PSDFHV100L	100	Long	16	216-350	415							17.3
PSDFHV150S	150	Short	16	175-250	330	380	190	285	4 x 90°	240	0-10°	25.4
PSDFHV150L	150	Long	16	250-408	480							29.3
PSDFHV200S	200	Short	16	195-292	360	229	229	340	4 x 90°	297	0-8°	48
PSDFHV200L	200	Long	16	280-462	530							52
 200 Short 10	200	Short	10	195-292	360							48
 200 Long 10	200	Long	10	280-462	530							52

Note:  = Available on request. Indent.
 Movements are not concurrent. Maximum deflection in one plane may result in less deflection being available in all other planes.

Branches Nationwide Support Office & Technical Services 0800 93 7473

Disclaimer: While every effort has been made to ensure that the information in this document is correct and accurate, users of Hynds product or information within this document must make their own assessment of suitability for their particular application. Product dimensions are nominal only, and should be verified if critical to a particular installation. No warranty is either expressed, implied, or statutory made by Hynds unless expressly stated in any sale and purchase agreement entered into between Hynds and the user.