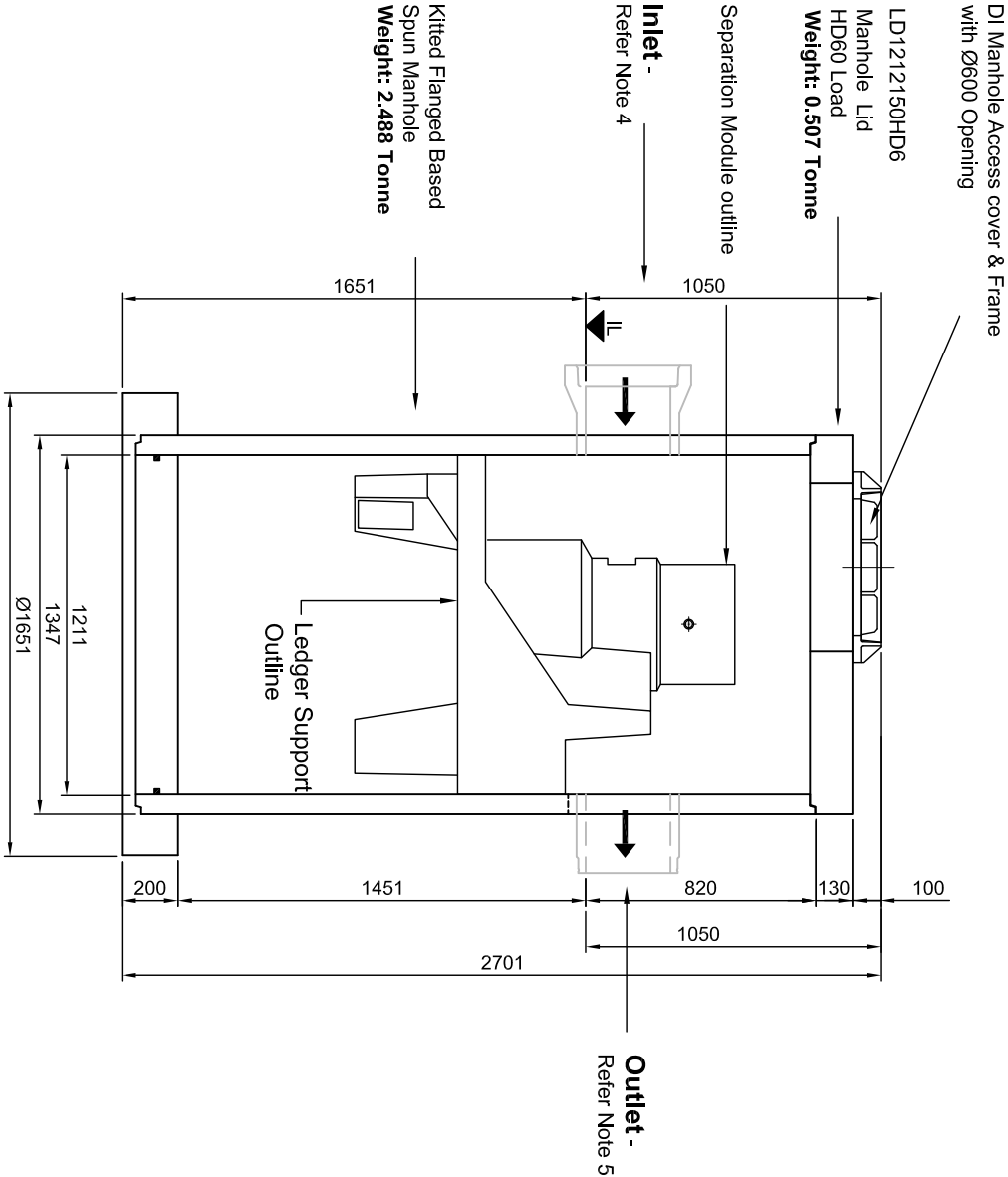
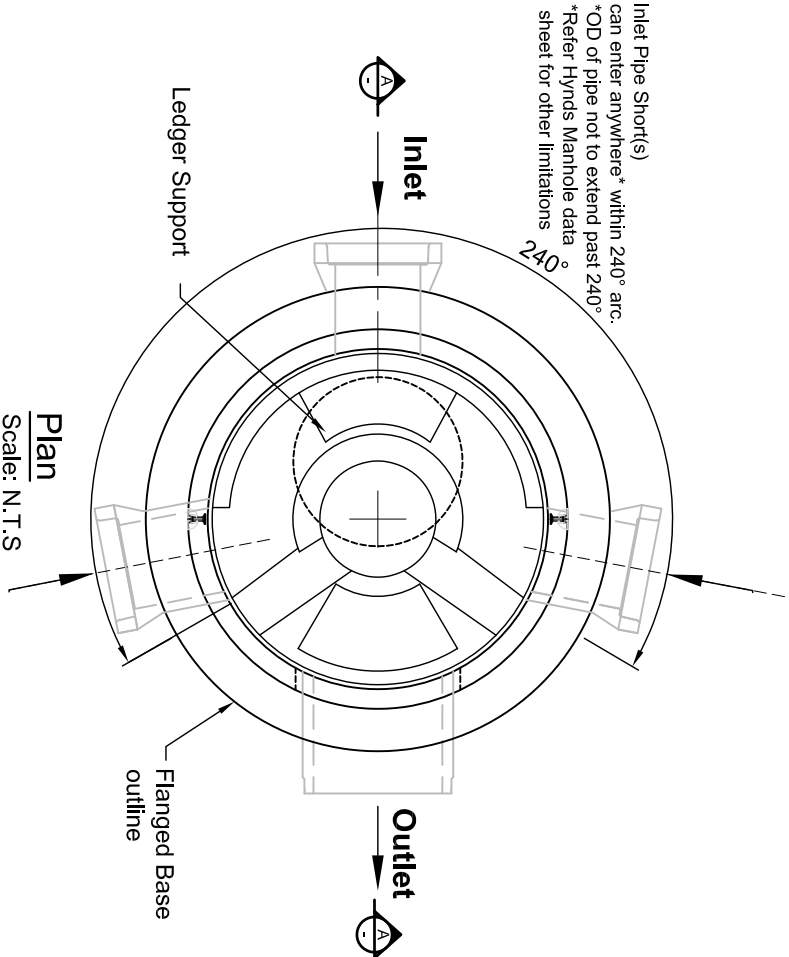


Please identify pipework size and type	
Concrete / PVC	Pipe Diameter (max 450mm)

NOTE:

- The unit is made up of a Kitted 1200Ø x 2400mmH flanged based manhole chamber, a 150mm thick HD60 Load rated concrete lid and a 600Ø ductile iron cover & frame.  
PLEASE NOTE: PIPEWORK NOT INCLUDED.
- The First Defense High Capacity 1200 can accommodate inlet and outlet pipes up to 450mm (nominal) Concrete or PVC. Please identify the pipe size required.
- Some dimensions could change to accommodate a site constraint situation. Please contact Hynds for technical assistance.
- Contractor to allow for Core Drilling, Supply and fitting of Inlet Pipe Shorts on site, this allows for correct orientations to suit site requirements. refer to the Project site plan for orientation.
- The opening for the outlet pipe will drilled by Hynds at Factory. Contractor to supply and fit outlet Pipe Shot on site
- If the outlet invert depth to the ground level is >1050mm, the contractor will need to provide an appropriate riser to suit the on-site requirements.



Section  
Scale: N.T.S

Spun Manhole Version

NOTES:

- Refer to Hynds Environmental literature for installation instructions
- Designed for Vehicle loads up to HD60 Consult Hynds if Higher Vehicle Loads required
- Consult Engineer where exposure classification C or U is required (Saltwater Tidal/Splash Zone or other aggressive environment)

MATERIALS

VOL (m³/unit) =	-
WT (ton/unit) =	
CODE =	

REVISIONS

REV #	REVISION DESCRIPTION:	DATE:	DRAWN:
1	Issued for Information	29 May 2020	GH

PO Box 58142, Botany, Auckland, 2163  
Tel: 09-274 0316  
Fax: 09-272 7485  
email: technicalservices@hynds.co.nz



© 2020  
HYNDS PIPE SYSTEMS LTD  
This drawing is the property of Hynds Pipe Systems Limited. Not to be disclosed to any other person without permission from Hynds Pipe Systems Limited. It is submitted for use only in connection with proposals and contracts of Hynds Pipe Systems Limited upon the express condition that it is not to be reproduced or copied in any form. Data to be used only with reference to products manufactured and supplied by Hynds Pipe Systems Limited.

ISO 9001 CERTIFIED MANAGEMENT SYSTEM

PROJECT DESCRIPTION:  
Hynds Pipe Systems Limited  
Standard Drawing  
FDHC - Spun Manhole Version

SERVICE DETAIL:  
FDHC1200 - Ø1200mm Spun Manhole  
First Defense High Capacity System

General Arrangement

REFERENCE/QUOTE NUMBER:			
DRAWN: GH	DESIGN: H.J	CHECKED: H.J	
SIGNATURE:	SIGNATURE:	SIGNATURE:	
SCALE: As Shown	Note: Do not scale drawing if in doubt <b>Ask!!!</b>	DATE:	
PAPER SIZE: A3		29 May 2020	
DRAWING NUMBER: T6513-2 (GA)	SHEET NUMBER: 1 of 1	REVISION NUMBER: 1	