

WaStop® Residential

Technical Guide D9.1

A simple and ingenious non-return valve that gives peace of mind by protecting your home from sewer backflow.



07.22 | DRAINAGE | D9.1 WASTOP RESIDENTIAL

Applications

- Protecting homes from:
- Sewer backflow flooding
 - Animal infestation
 - Sewer odours

Product Attributes

- Available in capacities between 2,000L and 10,000L
- Reduces the risk of backflow and flooding
- Stops liquids, gases, odours, insects and small animals
- Pulsating flow minimising the risk of clogging
- Unique heavy-duty memory membrane seals against backflow

Approvals/Standards

CE approved for residential applications

Quality

ISO 9001:2008 Quality Management System

ISO 14001:2015 Environmental Management System

We are the supply partner of choice for New Zealand's civil construction industry, specialising in water and infrastructure based solutions.

The WaStop® non-return valve is closed in its natural state, opening only to allow flow through the valve when required, such as when the toilet is flushed, the taps are used, or the washing machine is running.

Installation

WaStop® Residential should be installed in an accessible point either inside the house, or just outside. Installation is done by removing a section of pipe equal in length to the WaStop® and attaching the WaStop® to the existing pipe with flexible couplings. Care should be taken to ensure the valve is installed right-side-up.

The WaStop® non-return valves should be visually inspected twice per year.

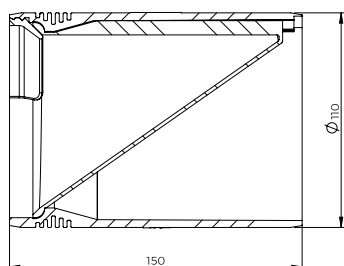


WaStop® Residential Dimensions

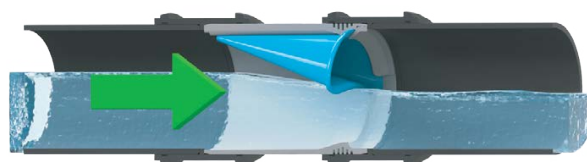
Product Code	DN (mm)	OD (mm)	L (mm)	*Xmin (mm)	Opening Pressure (mm)	Closing Pressure (mm)
VCWR0100PP	100	110	150	160	145	60

Note: Maximum back pressure 2m

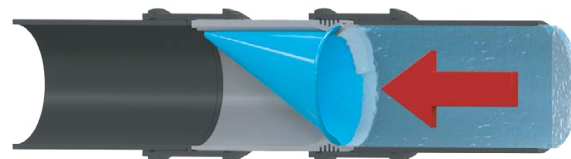
* X = The distance in height between the bottom of the floor drain and the bottom of the inlet end on the WaStop® multiplied by 1.15. This should be greater than the opening pressure of the valve.



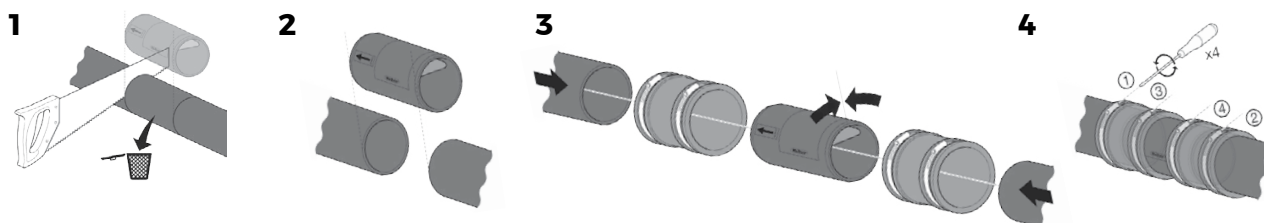
Install with 2x 1056.44 PlumbQwik couplers (supplied separately).



Open when outflow occurs



Closed against backflow



Branches Nationwide Support Office & Technical Services 0800 93 7473

Disclaimer: While every effort has been made to ensure that the information in this document is correct and accurate, users of Hynds product or information within this document must make their own assessment of suitability for their particular application. Product dimensions are nominal only, and should be verified if critical to a particular installation. No warranty is either expressed, implied, or statutory made by Hynds unless expressly stated in any sale and purchase agreement entered into between Hynds and the user.