

Hynds Kerb Back Blocks

Technical Guide D5.3

Used in conjunction with Hynds Standard Cesspits and Stormwater Grates, Hynds Kerb Back Blocks form an integrated solution for stormwater point drainage applications.



04.20 | DRAINAGE | D5.3 HYNDS KERB BLOCKS

Applications

Kerb block for back entry cesspits

Product Attributes

Designed to suit standard and mountable kerbs

Manufactured from durable and impact-resistant precast concrete

Approvals/Standards

NZS 3109, Concrete Construction

Quality

ISO 9001:2008 Quality Management Standard

We are the supply partner of choice for New Zealand's civil construction industry, specialising in water and infrastructure based solutions.

HYNDS
PIPE SYSTEMS

Used in conjunction with Hynds Standard Cesspits and Stormwater Grates, Hynds Kerb Back Blocks form an integrated solution for stormwater point drainage applications.

TABLE 1 Northern Region

Product Code	Type	Dimensions			
		A (mm)	B (mm)	C (mm)	D (mm)
CP900	Standard (Mortar) type	1010	140	230	740

TABLE 2 Central Region

Product Code	Type	Dimensions			
		A (mm)	B (mm)	C (mm)	D (mm)
CP900	Standard (Mortar) type	1010	140	230	740
CP845200	Standard (Mortar) type	845	175	195	700
CP845170	Standard (Mortar) type	845	160	170	700
CP845160	Standard (Mortar) type	845	165	150	640

TABLE 3 Capital Region

Product Code	Type	Dimensions			
		A (mm)	B (mm)	C (mm)	D (mm)
CP900	Standard (Mortar) Type	1000	130	240	740
KB - WCC	Standard (Mortar) Type	915	200	300	640
CP760NCC	Machine Laid Type	760	150	250	630
CP900PF	Machine Laid Type	920	150	220	770
KB600PF	Mountable Type	610	120	230	No opening
CP920NCC	Mountable Type	980	140	220	760

TABLE 4 Upper Southern Region

Product Code	Type	Dimensions			
		A (mm)	B (mm)	C (mm)	D (mm)
CP845160	Standard (Mortar) Type	1245	230	240	1135

TABLE 5 Lower Southern Region

Product Code	Type	Dimensions			
		A (mm)	B (mm)	C (mm)	D (mm)
CP900	Machine Laid Type	920	150	220	770

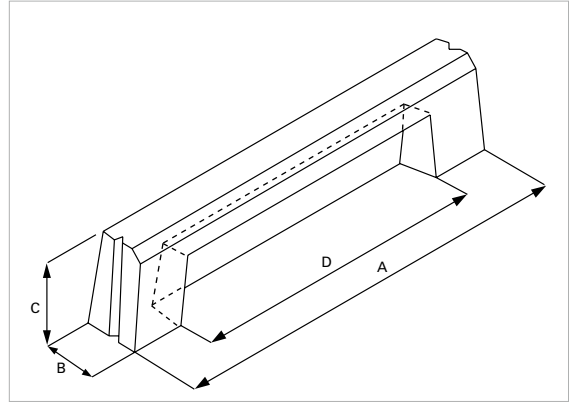


FIG. 1 Standard Kerb Back Block

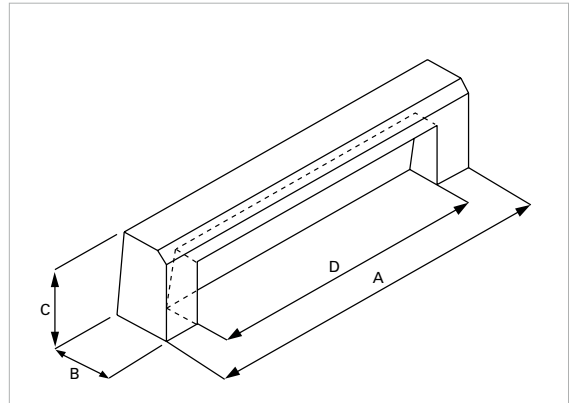


FIG. 2 Machine Laid

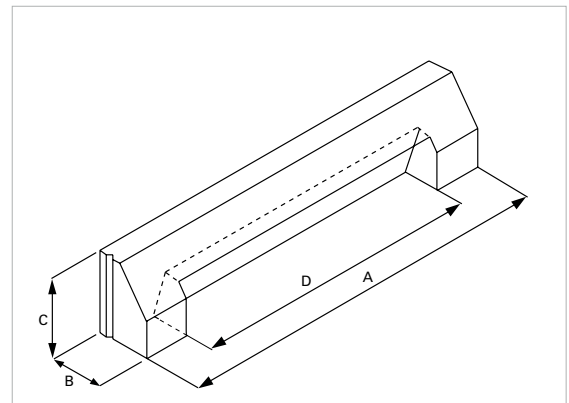


FIG. 3 Mountable Kerb Back Block

Branches Nationwide Support Office & Technical Services 09 274 0316

Disclaimer: While every effort has been made to ensure that the information in this document is correct and accurate, users of Hynds product or information within this document must make their own assessment of suitability for their particular application. Product dimensions are nominal only, and should be verified if critical to a particular installation. No warranty is either expressed, implied, or statutory made by Hynds unless expressly stated in any sale and purchase agreement entered into between Hynds and the user.