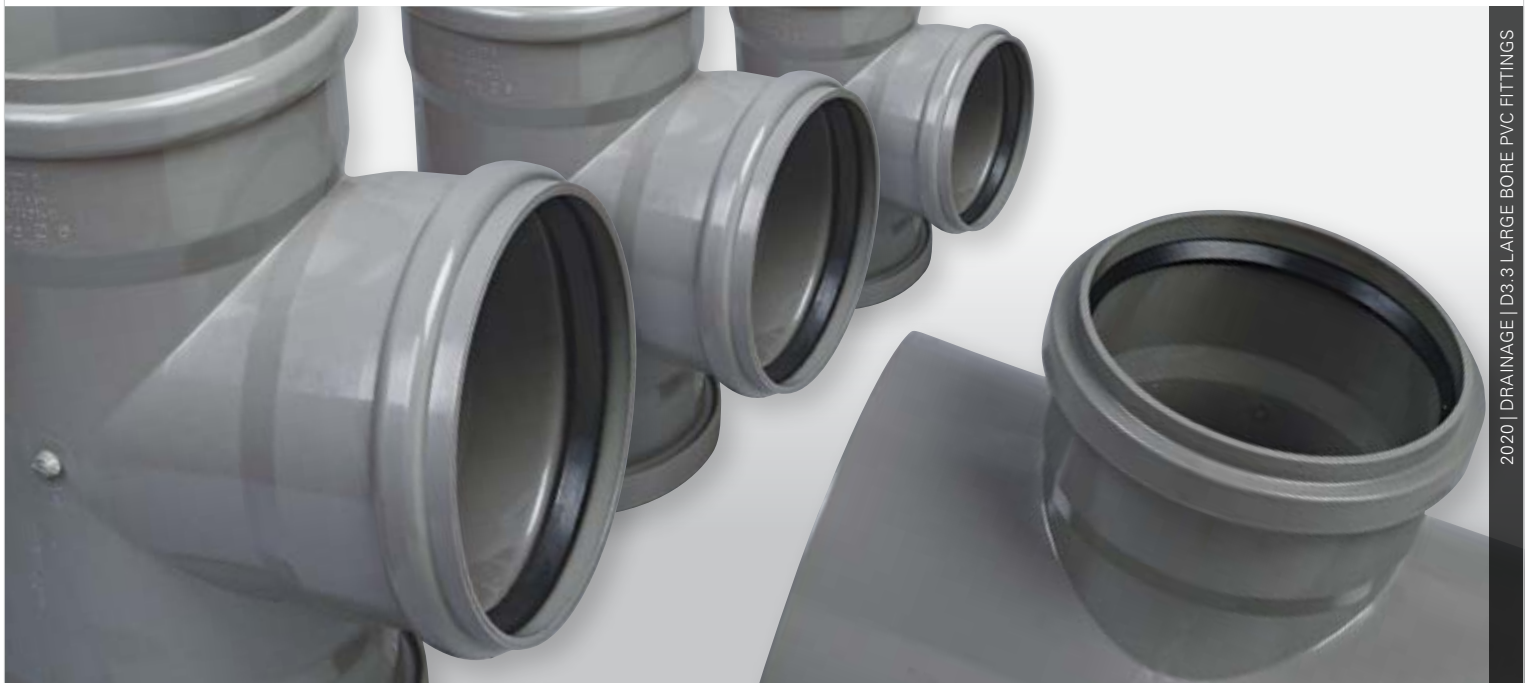


Large Bore PVC fittings

Technical Guide D3.3

A range of large bore PVC pipe fittings in both Sleeve Joint (SJ) and Rubber Ring Joint (RJ).



2020 | DRAINAGE | D3.3 LARGE BORE PVC FITTINGS

Applications

Suitable for DWV systems 175 - 300 mm

Product Attributes

Injection moulded giving added strength,
no joins or fabrication

Both socket and rubber ring joints,
available in F/F & M/F configuration

Approvals/Standards

Made to AS/NZS 1260:2002

Quality

ISO 9001:2008 Quality
Management Standard

*We are the supply partner of choice for New Zealand's
civil construction industry, specialising in water and
infrastructure based solutions.*

A range of large bore PVC pipe fittings in both Sleeve Joint (SJ) and Rubber Ring Joint (RJ).

Applications

- Suitable for joining plain end PVC pipes.
- Water reticulation.
- Sewer and water pump stations.
- Made to AS/NZS 1260:2002.

Features

- Strength and Stiffness is achieved from Injection moulding. There are no joins or fabrication. This will produce a SN6 fitting according to AS/NZS 1260. Clause 1.6 in AS/NZS 1260 states:

“Injection-moulded plain wall fittings are designated Class SN6. These fittings are suitable for use in systems using classes up to and including SN16 plain wall or sandwich construction pipe”.

This is based on the fact that the geometry of the fittings results in a much higher stiffness than for a straight pipe. In addition the pipe that is inserted into the socket further stiffens the fittings.

- Jointing Systems
Both joining systems, sleeve and rubber ring, available in F/F & M/F configuration.

Wide Range

- 45° & 90° bends, junctions & saddles.
- Level and invert reducers (M/F).
- Slip couplers.
- Push on end caps.
- Smooth bore provides unrestricted flow.

Lubricant & Solvents

- We recommend the use of Oatey pipe lubricant and solvents.

Easy to install

- All male spigots are factory bevelled for easy positive insertion in female sockets. Non-mechanical fitting, no special tools required.

Environment

- Designed for underground sewer and drainage systems.
- Protection required for use above ground in direct sunlight.

Testing

- Leak testing
Random factory leak testing carried out in accordance with EN 1401-1:1998 standard.
- Strength Testing
Random factory strength testing carried out in accordance with EN 1401-1:1998 standard.

Design Specifications

- Standards
Fittings manufactured in accordance with European standard EN 1401-1:1198 for PVC sewer and drain fittings, this standard meets and exceeds the AS/NZS 1260:2002 standard for PVC DWV fittings.

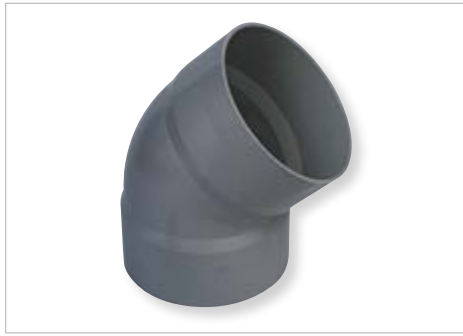


FIG. 1 701.225.45I



FIG. 2 1501.225.88



FIG. 3 774.175.150I



FIG. 4 7105.225I



FIG. 5 737.225I



FIG. 6 15115.225



FIG. 7 1523.225.175

Branches Nationwide *Support Office & Technical Services 09 274 0316*

Disclaimer: While every effort has been made to ensure that the information in this document is correct and accurate, users of Hynds product or information within this document must make their own assessment of suitability for their particular application. Product dimensions are nominal only, and should be verified if critical to a particular installation. No warranty is either expressed, implied, or statutory made by Hynds unless expressly stated in any sale and purchase agreement entered into between Hynds and the user.