

Gatic Slotdrain

Technical Guide D17.1

A tough, unobtrusive, low profile surface drainage system capable of handling large hydraulic volumes.



02.21 | DRAINAGE | D17.1 GATIC SLOT DRAIN

Applications

Three systems available to suit pedestrian to heavy industrial applications:

Paveslot: suitable for malls, plazas and paved areas

Unislot: suitable for car parks, urban and industrial areas

Ultraslot: suitable for wharves, airports and heavy industrial areas

Product Attributes

Excellent hydraulic capture

Continuous intake slot

Channel size range from 100–600mm

Supplied in three metre lengths for quick and easy installation

Ability to run long and uninterrupted

Approvals/Standards

Complies with BS EN 1433:2002

Watertight tested to BS EN 1433 and BSI certified

Quality

ISO 9001:2008 Quality

Management Standard

We are the supply partner of choice for New Zealand's civil construction industry, specialising in water and infrastructure based solutions.

A tough, unobtrusive, low profile surface drainage system capable of handling large hydraulic volumes.

Application

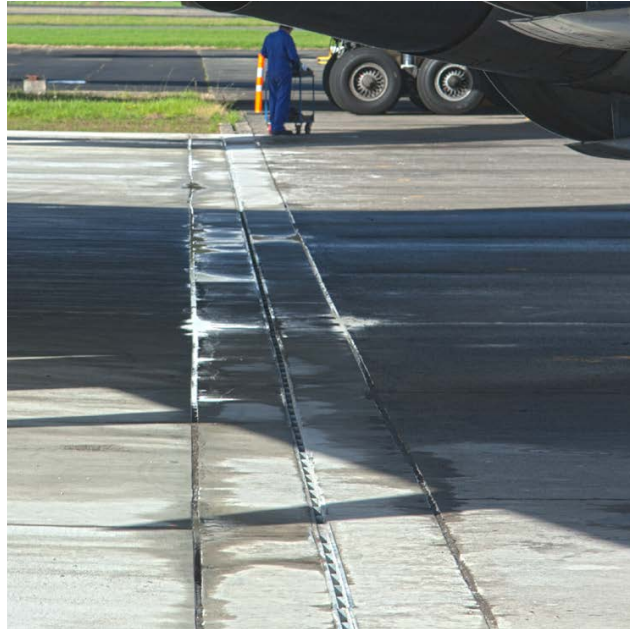
- Ideal for large sealed areas, airport aprons, wharves, plazas etc where an efficient surface drainage system is called for. Three systems available to cover from pedestrian up to heavy industrial applications
- Paveslot
Suitable for malls, plazas and paved areas
- Unislot
Suitable for car parks, urban and industrial areas
- Ultraslot
Suitable for wharves, airports and heavy industrial areas

Features

- Highly efficient stepped fall design capabilities
- Ability to run long uninterrupted runs through a stepped system
- Full technical and hydraulic programmes available to evaluate the most economical and efficient systems to suit your needs
- No grates to come loose or get stolen, ideal for any vehicle traffic

Installation

- Full installation instructions available on request
- Full technical and hydraulic programmes available to evaluate the most economical and effective systems to suit your needs.
- Full range of accessories and outlet/access boxes available.



Project References

- Airports: Auckland Int, Christchurch Int, Ohakea Airbase
- Warehouses: Foodstuffs P/Nth, Expeditors Mangere AKL, Fonterra Mosgiel
- Plazas / Malls: High St CBD Lower Hutt, Levin CBD
- Other: Shell service stations, Hampton Downs Racepark

Product	Dimensions
Paveslot (rated D400)	10 mm slot x 150 mm to 225 mm body width
Unislot (rated D400)	10 mm slot x 100 mm to 300 mm body width
Ultraslot (rated F900)	30 mm slot x 150 mm to 600 mm body width

Branches Nationwide Support Office & Technical Services 09 274 0316

Disclaimer: While every effort has been made to ensure that the information in this document is correct and accurate, users of Hynds product or information within this document must make their own assessment of suitability for their particular application. Product dimensions are nominal only, and should be verified if critical to a particular installation. No warranty is either expressed, implied, or statutory made by Hynds unless expressly stated in any sale and purchase agreement entered into between Hynds and the user.