

EJ Composite 600 & 900mm Bolt Down Access Cover

Technical Guide D16.20

The new EJ Composite Bolt Down Access Covers are ideal for harsh corrosive environments, power stations, and fuel stations.



03.25 | DRAINAGE | D16.20 EJ COMPOSITE 600 AND 900 MM BOLT DOWN ACCESS COVER

Applications

Harsh Sewer and Wastewater
Environments

Power Stations

Fuel Stations and Depots

High Intensity Traffic Environments

Approvals/Standards

Non-corrosive and non-conductive

Gas and Water-tight cushioning and
sealing gasket.

Three "built in" bolt downs point
for security.

More ergonomically friendly than
metal covers

Approvals/Standards

Load Rated to AS3996:2019 Class D

Sustainability

ENVIRONMENTALLY SUSTAINABLE
Composite products by EJ contribute to
a reduced carbon footprint with a low
temperature manufacturing process and
reduced transportation weight.

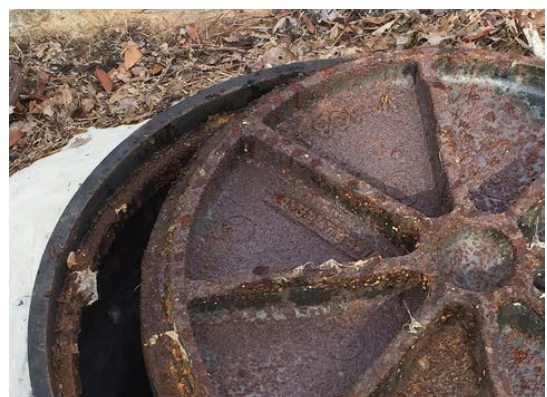
Quality/Environment/Health & Safety

ISO 9001:2015, ISO 14001:2015 and
ISO 45001:2018

The EJ Composite Access Covers are designed to suit highly corrosive environments and for power stations or fuel stations where a non-conductive access solution is required.

Features and Benefits

- High corrosion resistance for sewer, wastewater, petrochemical, and saltwater environments that conventional iron access covers can corrode in.
- User Friendly. With significantly less lifting weight than standard metal covers, composite covers are much easier to install and to access.
- Non-Conductive. Composite covers are a composition of materials that do not conduct electricity. They are ideal for use around industrial utility sites and being non-metallic, heat transfer is also very much reduced.
- No Signal Interference. Because of their material content, composites offer virtually no interference with wireless IOT signals, so they are ideal in water metering automation or electrical switching for smart grid technology.
- Theft Deterrent. Unlike metal covers, composites are of little value to the scrap industry.





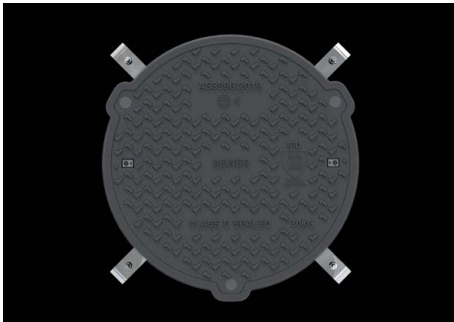
Product Installation information

The COMPC900D (900 dia) has larger flanges on the frame and, when required, can be drilled for M12 holes for hold down points.

For more restraint on the COMPC600D (600 dia) frame there is a separate kit consisting of 4 x 316 Stainless Steel brackets designed to provide additional support to the frame.

Kit Product Code: **COMPC600D-B-KIT**

Please Note: Bolts/ dyna bolts are not included in this kit. (Site specific bolt selection is required)



Item Code	Clear opening Dia. (mm)	Overall Frame Dimensions			
		Dia	Height	Cover only Weight (kg)	Total Weight (kg)
COMPC600D	600	765 mm	75 mm	32	48
COMPC900D	905	1080 mm	100 mm	73	105

Branches Nationwide Support Office & Technical Services 0800 93 7473

Disclaimer: While every effort has been made to ensure that the information in this document is correct and accurate, users of Hynds product or information within this document must make their own assessment of suitability for their particular application. Product dimensions are nominal only, and should be verified if critical to a particular installation. No warranty is either expressed, implied, or statutory made by Hynds unless expressly stated in any sale and purchase agreement entered into between Hynds and the user.

hynds.co.nz
0800 93 7473

HYNDS
PIPE SYSTEMS